



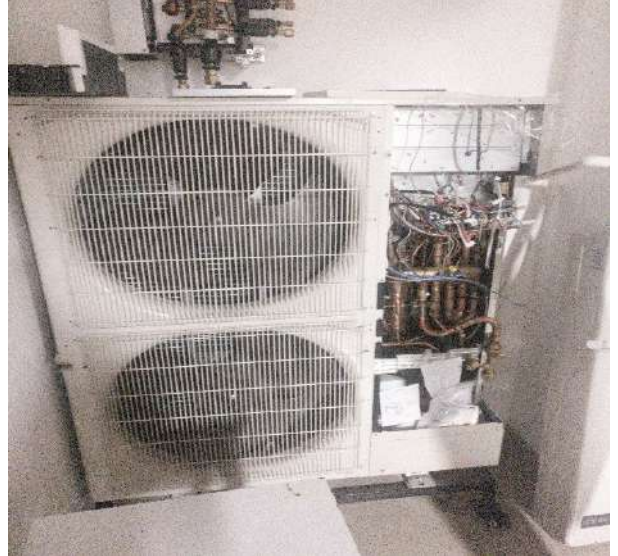
Industrial Visit to Mitsubishi

ISHRAE Thane chapter organised an industrial visit for the students of Don Bosco Institute of Technology on 6th October 2017 to Mitsubishi Electric in Marol, Mumbai. The students, accompanied by Mr. Sandeep Shinde, Chair of Student Chapter of ISHRAE, Thane, and Mr. Bhaskar Jare, President of ISHRAE, Thane chapter; were cordially welcomed into the workspace. After a brief introduction about the staff and the workspace, the session commenced.

Mr. Rajkumar Iyer, with the help of presentations, explained to the students the functioning of the HVAC section of Mitsubishi. He told us about the wide range of products manufactured by Mitsubishi viz. air curtains, air conditioners, chillers, radiators, etc. We learnt that Mitsubishi made air conditioner ranging from 0.7 ton to 4000-ton capacity. We were introduced to the concepts of double-glazing glasses, dry bulb and wet bulb, etc. We learnt about vapour compression cycles and vapour absorption cycles. Mr. Rajkumar Iyer, explained to us the types of air conditioner viz. window, split, CHW, VRF, rooftop package, etc., and their applications.



Enlightening the students about the immense responsibility a mechanical engineer shoulders, he spoke about the various career options available for an engineer in the HVAC sector. He told us about how an application engineer plays a vital role in the selection of the appropriate cooling system for the desired applications. The session came to an end at 1:30 p.m., after which the students were guided to an adjoining room, containing the air conditioning units. The students were shown the electronics that go behind making the HVAC utilities and machines.



The students were then offered snacks. A few words by one of the students, thanking the speaker and Mitsubishi for the session, brought the industrial visit to an end.